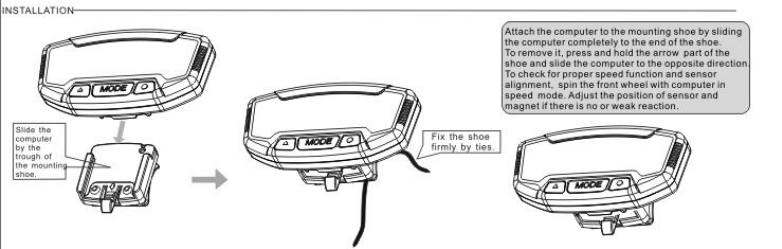
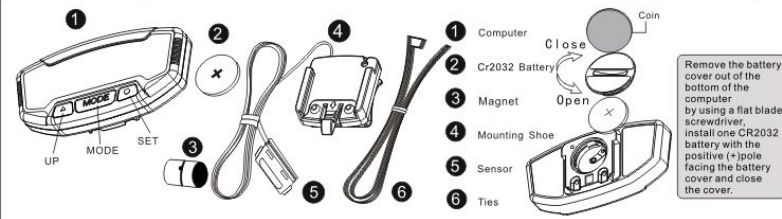
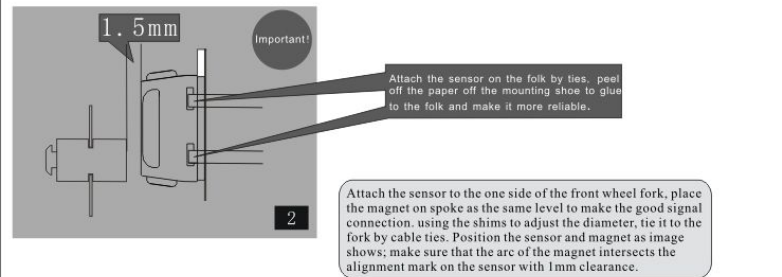
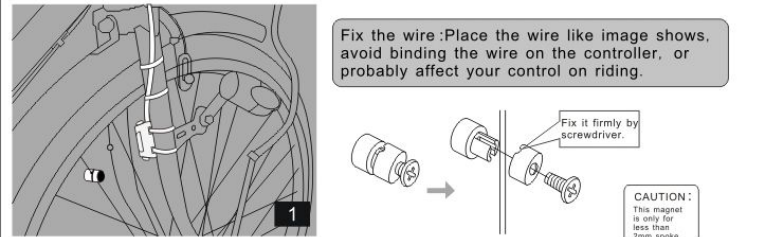


COMPUTER & PARTS



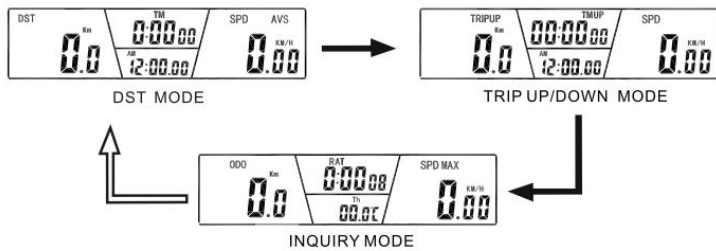
COMPONENT ILLUSTRATIONS



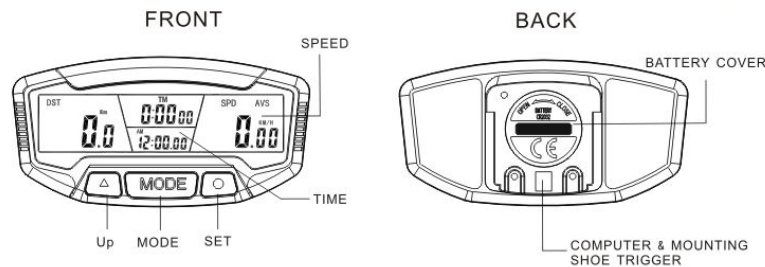
INSTRUCTION

MODE INSTRUCTION

When battery is put in the computer, the display is in DST mode. It has three modes of this computer, DST, TRIP UP/DOWN and INQUIRY MODE. Each press of the MODE button switches into one of three MODES. The DST MODE is the default one.



MAIN UNIT



MALFUNCTIONS AND REASONS

- 1, No speedometer**
A. Improper magnet/sensor alignment
- 2, Inaccurate value is indicated**
A. Improper input, such as wheel circumference.
- 3, Slow display response**
A. Temperature exceeds operating limits (0°C~55°C).
- 4, Weak display**
A. Poor battery or dead battery.
- 5, Displays irregular figures**
A. Take battery out and reinstall it after 10 seconds..

COMPUTER SETTINGS

TEMPERATURE SETTING (°C/°F)

In INQUIRY MODE, press the SET button for 3 seconds to go to DATA SETTING MODE, press UP button to choose C or F, press SET button to confirm and enter into CLOCK SETTING MODE.



12/24 CLOCK SETTING

Press UP button to switch 12/24 hour mode, press the SET button to confirm and enter to HOUR setting, when figure indicates HOUR and start flashing, press the UP button to adjust the figure to the proper one, each press makes one number plus. Then press the SET button to set MINUTE, SECOND SETTING MODE and adjust them by pressing UP button as well. When this setting is over, press SET button to enter into WHEEL SIZE SETTING MODE.



WHEEL SIZE SETTING & CHART

TIRE SIZE	CIRC	TIRE SIZE	CIRC	TIRE SIZE	CIRC
700CX38mm	2180	650CX23mm	1990	26" x 1.75"	2035
700CX35mm	2168	650CX20mm	1945	26" x 1.5"	1985
700CX32mm	2155	27" x 1-1/4"	2161	26" x 1.25"	1953
700CX30mm	2145	27" x 1-1/8"	2155	26" x 1.0"	1913
700CX28mm	2136	26" x 2.3"	2135	24" x 1.9"	1916
700CX25mm	2124	26" x 2.25"	2115	20" x 1-1/4"	1818
700CX23mm	2105	26" x 2.1"	2095	1.6" x 2.0"	1253
700CX20mm	2074	26" x 2.0"	2074	1.6" x 1.95"	1257
700CX20mm	2130	26" x 1.9"	2055	1.6" x 1.5"	1206

When in WHEEL SIZE SETTING MODE, the default wheel circumference setting is 2080mm. Choose correct wheel circumference figure as the chart below. Press UP button to change each figure properly, press SET button to confirm and jump to next figure. (Range: 0-9999mm). When this setting is over, press SET button to enter into (KM/H)/(M/H) SETTING MODE.



(KM/H) / (M/H) SETTING

When in (KM/H)/(M/H) SETTING MODE, press the UP button to switch KM/H or M/H mode, press SET button to confirm and enter into ODOMETER SETTING MODE.



ODOMETER SETTING

When in ODOMETER SETTING MODE, Press UP button to adjust the flashing ODO figure. Press SET button to jump to next number and set them as the same way. The default number is 0000 (range: 0-9999kms/miles). When this setting is over, press SET button to enter into RAT SETTING MODE.



RAT SETTING

When in RAT SETTING MODE, press UP button to adjust press SET button to jump to next figure. The default number is 00:00:00 (range: 0-9999Hrs). When this setting is over, press SET button to enter into DISPLAY MODE, then press MODE to enter into TM UP & TRIP UP SETTING MODE.



TM UP & TRIP UP SETTING

When in TM UP & TRIP UP SETTING MODE, press and hold SET button for three seconds to SET the figure of TM UP & TRIP UP. Press UP button to adjust, press SET to jump to next figure. The TM UP default number is 00:00:00 (range: 0-99.59.59Hrs). The TRIP UP default number is 000.0 (range: 0-999.9kms/miles). Press SET button to finish this setting and back to TM UP & TRIP UP SETTING MODE. Press SET button to enter into TM DOWN & TRIP DOWN SETTING MODE.



TM DOWN & TRIP DOWN SETTING

When in TM DOWN & TRIP DOWN SETTING MODE, press and hold SET button for three seconds to SET the figure of TM DOWN & TRIP DOWN. Press UP button to adjust, press SET to jump to next figure. The TM DOWN default number is 00:00:00 (range: 0-99.59.59Hrs). The TRIP DOWN default number is 000.0 (range: 0-999.9kms/miles). Press SET button to finish this setting and back to TM DOWN & TRIP DOWN SETTING MODE.



ONE SINGLE TRIP DATA RESET

In any mode, press and hold UP button for 3 seconds, then all the data of this single trip riding will be reset to zero except CLK ODO and RAT.

MAIN FUNCTIONS

SPD

When the wheel is circling, the current speed data is showing all the time on the screen, its ranges is: 0-99.9km/h(m/h), and it is accurate to +/- 0.1km/h (m/h).

SPD COMPARATOR

During riding, $\frac{H}{L}$ or $\frac{L}{H}$ will display on the screen, $\frac{H}{L}$ indicates the speed is higher than average speed, $\frac{L}{H}$ indicates the current speed is lower than average speed.

ODO

The total distance record from the beginning zero to the current, its mileage ranges: 0.001~99999km(m). The display will automatically turn to zero if the value is out of the range.

DST

The distance of one single trip. Its range is: 0-9999km(m). The display will automatically turn to zero if the value is out of the range.

MAX SPD

The maximum speed of one single trip.

AVS

The average speed of one single trip.

TM

The trip time is how long one single trip riding lasts.

TTM

The total trip time record from the beginning zero to the current, its range is: 0-99:59:59. The display will automatically turn to zero if the value is out of the range..

RAT

Riding time record in total from the beginning zero to the current, its range is 0-9999 Hr..

STOPWATCH

In DST or ODO mode, press SET button to enter into STOPWATCH MODE. Start stopwatch with UP button, press UP button again to freeze, press one more UP button to start the stopwatch again. Clean the stopwatch data by pressing SET button.

TH

The current outdoor temperature, its ranges is: -20-70 (°C) -4°F~158°F.

SLEEP MODE

If the computer is free for over 300 seconds, the computer will automatically enter into Sleep mode and hide all data but CLK. It will turn back to the previous mode with all the data when start circling or press any button.

OVER-SPEED REMINDER

When the SPD is over 20KM/H, the SPD will be flashing until the SPD is less than 20KM/H.

MAINTENANCE ALERT

When the ODO is over 300KM, the display will be flashing, press both UP and MODE button at the same time to clear the reminder.

CARE REMINDER

When the ODO is over 300KM, the display will be flashing, press both SET and MODE button at the same time to clear the reminder.



FREEZE FRAME MEMORY

Press the UP button in any mode except STOPWATCH mode to enter into FreezeFrame memory mode, DST, TTM, SPD data will be frozen and the figures start flashing. Press the UP button to leave this mode.

WIRED REMOTE CONTROL (SD-558C)

The wired remote control button is attached the mounting shoe, it is able to replace the MODE button..

- TRIP UP Trip count up
- TRIP DN Trip count down
- TM UP Time count up
- TM DN Time count down

AUTO LIGHT

It can sense automatically the light intensity around the computer. It is on when there is insufficient light, press any button to turn on the back light. It is OFF automatically when there is sufficient light. Press the MODE button for 3 seconds, the back light will last for 5 seconds, press the MODE button for 5 seconds, the back light will keep brightening, press the MODE button for another 5 seconds, the back light will shut down.