

SD-576C

FUNCTIONS ILLUSTRATIONS

- SPD CURRENT SPEED
 - ODO ODOMETER(0-9999km/m)
 - DST TRIP DISTANCE
 - MXS MAXIMUM SPEED
 - AVS AVERAGE SPEED
 - TTM TOTAL TRIP TIME
 - TM TRIP TIME
 - RAT RIDING ALL TIME
 - CLK CLOCK (12H/24H)
 - SW STOPWATCH
 - TEMPERATURE
 - TM UP TRIP TIME UP
 - TM DN TRIP TIME DOWN
 - TRIP UP TRIP DISTANCE UP
 - TRIP DN TRIP DISTANCE DOWN
 - COMPARATOR
- MAINTENANCE ALERT
 - MACHINE OIL REMINDER
 - OVER-SPEED REMINDER
 - SETTING TYRE CIRCUMFERENCE
 - SETTING THE LAST VALUE OF ODOMETER
 - SETTING SPEED SCALE(km/h, m/h)
 - LOW BATTERY INDICATOR
 - FREEZE FRAME MEMORY
 - AUTO BACK LIGHT
 - WIRELESS DIGITAL CODE
 - LCD BACK LIGHT
 - SMART BACK LIGHT
 - KEEP BRIGHTENING
 - SLEEP MODE
 - WIRELESS WAKE UP
 - TOUCH SCREEN

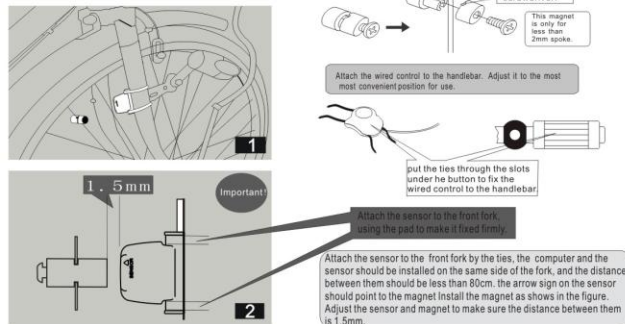
HEAD UNIT ILLUSTRATION



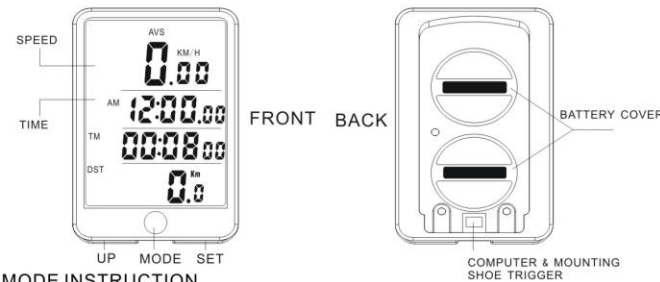
COMPONENT ILLUSTRATIONS



COMPONENT ILLUSTRATIONS

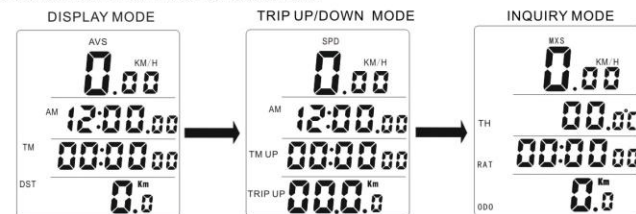


INSTRUCTION



MODE INSTRUCTION

When the battery is put in the computer, the display is in DST mode. It has three modes of this computer, DST, TRIP UP/DOWN and INQUIRY MODE. Each press of the MODE button switches into one of three MODEs. The DST MODE is the default one.



MALFUNCTIONS AND REASONS

1. KM/H value keep 0 during riding
Improper magnet/wireless transmitter alignment, or the distance between the computer and the wireless transmitter is more than 80cm.
2. Inaccurate value is indicated
Take out the battery and reset it after 10 seconds.
3. Black display
Exposed to direct sunlight or high temperature environment for too long. Cold it down in a shadow for some time.
4. Display shows irregular figures
Poor battery contact or dead battery. Check and reset the battery or change a new battery.
5. Display readout fades out
The battery voltage is low, change a new battery.

COMPUTER SETTING

TEMPERATURE SETTING (° C/° F)
In INQUIRY MODE, press SET button for 3 seconds to go to DATE SETTING MODE, press UP button to choose C or F, press SET button confirm and enter into CLOCK SETTING MODE.

12/24 CLOCK SETTING

Press the UP button to select time mode as 12H or 24H. Press the SET button to enter HOUR setting mode, when the figure indicating HOUR start to flash, press the UP button to adjust it continue to press the SET button to enter MINUTE setting mode when the figure indicating MINUTE start to flash, press the UP button to enter into TYRE CIRCUMSTANCE setting mode.

WHEEL SIZE SETTING & CHART

In WHEEL SIZE SETTING MODE, the default wheel circumference setting is 2080mm. Choose correct wheel circumference figure as the chart below. Press UP button to change each figure properly, press SET button to confirm and jump to next figure. (Range: 0-9999mm). When this setting is over, press SET button to enter into (KM/H)/(M/H) SETTING MODE.

(KM/H) / (M/H) SETTING

In (KM/H)/(M/H) setting mode, press the UP button to switch km/h or m/h. Press the SET button to confirm and enter into ODOMETER SETTING MODE.

ODOMETER SETTING

In ODO setting mode, press the UP button to adjust the flashing digitals and press the SET button to advance the digital, the default number is 0000(ranges 0-9999km/miles). When finished the ODO setting, press the SET button to enter into the RAT SETTING MODE.

RAT SETTING

In RAT setting mode, press the UP button to adjust the flashing digital and press the SET button to jump to next figure. The default number is 00:00:00(ranges 0-9999hours). Having finished the RAT setting, press the SET button to enter into the DISPLAY MODE. Then press MODE to enter into TM UP & TRIP UP SETTING MODE.

TM UP & TRIP UP SETTING

In TM UP & TRIP UP SETTING MODE, Press the SET button for 3 seconds, to enter into the TM UP and TRIP UP setting mode, press the UP button to adjust, press the SET button to jump to next figure. The default number for TRIP UP is 000.(ranges 0-999.9km/mile). The default number for TM UP is 00:00:00(ranges 0-99:59:59 hours). Press the SET button to finish this setting and enter into TM DOWN & TRIP DOWN SETTING MODE.

TM DOWN & TRIP DOWN SETTING

In TM DOWN and TRIP DOWN SETTING MODE, press the SET button for 3 seconds to set the figure of TM DOWN and TRIP DOWN. Press the UP button to adjust, Press the SET button to jump to next figure. The default number for TM DOWN is 00:00:00(ranges 0-99:59-99:59 hours). The default number for TRIP DOWN is 000.0 (ranges -99.9-999.9 km/mile). Press the SET button to finish this setting and back to TM DOWN & TRIP DOWN SETTING MODE.

ONE SINGLE TRIP DATA RESET

In any mode, press and holds UP button for 3 seconds, then all the date of this single trip riding will be reset to zero except CLK ODO and RAT.

TIRE SIZE	CIRC(mm)
16" x 1.5"	1206
16" x 1.95"	1253
16" x 2.0"	1257
20" x 1.25"	1450
20" x 1.35"	1460
20" x 1.50"	1490
20" x 1.75"	1515
20" x 1.95"	1565
20" x 1-1/8"	1545
20" x 1-3/8"	1615
20" x 1-1/4"	1618
22" x 1-3/8"	1770
22" x 1-1/2"	1785
24" x 1(520)"	1753
24" x 3/4 Tubular	1785
24" x 1-1/8"	1795
24" x 1.75"	1890
24" x 1-1/4"	1905
24" x 1.9" / 1.95"	1916
24" x 2.00"	1925
24" x 2.125"	1965
26" x 1.0"	1913
26" x 1.25"	1953
26" x 1.5"	1985
26" x 1.75"	2035
26" x 1.9" / 1.95"	2055
26" x 2.0"	2074
26" x 2.1"	2095
26" x 2.25"	2115
26" x 2.3"	2135
27" x 1-1/8"	2155
27" x 1-1/4"	2161
29" x 2.1"	2288
29" x 2.2"	2298
29" x 2.3"	2326
650c x 20mm	1945
650c x 23mm	1990
700c Tubular	2130
700c x 20mm	2074
700c x 23mm	2105
700c x 25mm	2124
700c x 28mm	2136
700c x 30mm	2145
700c x 32mm	2155
700c x 35mm	2168
700c x 38mm	2180

FUNCTIONS

SPD

When the wheel is circling, the current speed data is showing all the time on the screen. Its ranges is: 0-99.9km/h(m/h), and it is accurate to +/- 0.1km/h (m/h).

SPD COMPARATOR

During riding, or will display on the screen. indicates the speed is higher than average speed. indicates the current speed is lower than average speed.

ODO

The total distance record from the beginning zero to the current. Its mileage ranges: 0.001-9999km(m). The display will automatically turn to zero if the value is out of the range.

DST

The distance of one single trip. Its range is: 0-9999km(m). The display will automatically turn to zero if the value is out of the range.

MAX SPD

The maximum speed of one single trip.

AVS

The average speed of one single trip.

TM

The trip time is how long one single trip riding lasts.

TTM

The total trip time record from the beginning zero to the current. Its range is: 0-99:59:59. The display will automatically turn to zero if the value is out of the range..

RAT

Riding time record in total from the beginning zero to the current. Its range is 0-9999 Hr..

STOPWATCH

In DST or ODO mode, press SET button to enter into STOPWATCH MODE. Start stopwatch with UP button, press UP button again to freeze, press one more UP button to start the stopwatch again. Clean the stopwatch data by pressing SET button.

TH

The current outdoor temperature. Its ranges is: -20~70 (°C) -4°~158° F.

SLEEP MODE

If the computer is free for over 300 seconds, the computer will automatically enter into Sleep mode and hide all data CLK. It will turn back to the previous mode with all the data when start circling or press any button or shake handlebar.

OVER-SPEED REMINDER

When the SPD is over 20KM/H, the SPD will be flashing until the SPD is less than 20KM/H.

MAINTENANCE ALERT

When the ODO is over 300KM, the will be flashing, press both UP and MODE button at the same time to clear the reminder.

CARE REMINDER

When the ODO is over 300KM, the will be flashing, press both UP and MODE button at the same time to clear the reminder.

FREEZE FRAME MEMORY

Press the UP button in any mode except STOPWATCH mode to enter into FreezeFrame memory mode. DST, TTM, SPD data will be frozen and the figures start flashing. Press the UP button to leave this mode.

LOW BATTERY INDICATOR

when the voltage is low, the low voltage symbol will be flashing, after change the battery the symbol disappear.

TOUCH SCREEN(MODE)

Touch the mark bit of MODE, MODE will switch automatically.

AUTO BACK LIGHT & EVER-BRIGHTENING BACK LIGHT

It can sense automatically the light intensity around the computer. It will be ON when there is insufficient light. Press any button to turn on the back light. It will be OFF automatically when there is sufficient light. Press the MODE button for 5 seconds, the back light will keep brightening, press it for another 5 seconds, the back light will be OFF.

WIRED REMOTE CONTROL

The wired remote control is attached the mounting shoe, it is easy to switch when riding.