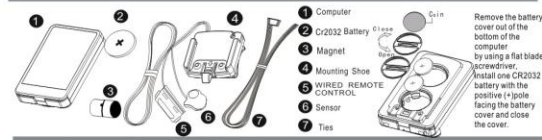


# SD-576A

## FUNCTIONS ILLUSTRATIONS

- SPD CURRENT SPEED
- ODO ODOMETER(0-9999km/m)
- DST TRIP DISTANCE
- MKS MAXIMUM SPEED
- AVS AVERAGE SPEED
- TTM TOTAL TRIP TIME
- TM TRIP TIME
- RAT RIDING ALL TIME
- CLK CLOCK (12H/24H)
- SW STOPWATCH
- TEMPERATURE
- TM UP TRIP TIME UP
- TM DN TRIP TIME DOWN
- TRIP UP TRIP DISTANCE UP
- TRIP DN TRIP DISTANCE DOWN
- S & COMPARATOR
- MAINTENANCE ALERT
- MACHINE OIL REMINDER
- OVER-SPEED REMINDER
- LOW BATTERY INDICATOR
- SETTING TYRE CIRCUMFERENCE
- SETTING THE LAST VALUE OF ODOMETER
- SETTING SPEED SCALE(km/h, m/h)
- FREEZE FRAME MEMORY
- LCD BACK LIGHT
- SMART BACK LIGHT
- KEEP BRIGHTENING
- SLEEP MODE
- WIRELESS WAKE UP
- TOUCH SCREEN

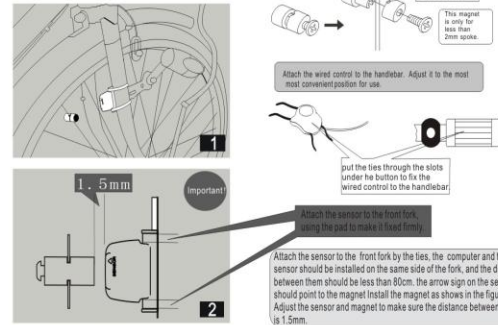
## HEAD UNIT ILLUSTRATION



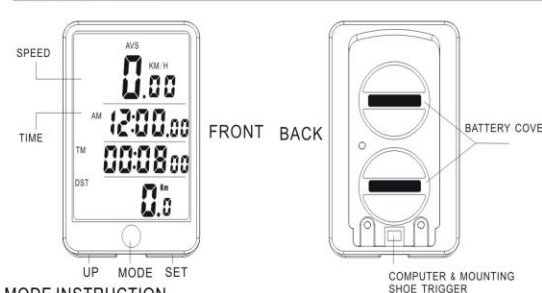
## COMPONENT ILLUSTRATIONS



## COMPONENT ILLUSTRATIONS

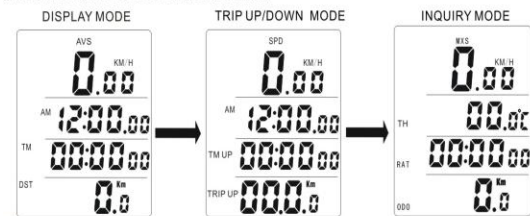


## INSTRUCTION



## MODE INSTRUCTION

When battery is put in the computer, the display is in DST mode. It has three modes of this computer, DST, TRIP UP/DOWN and INQUIRY MODE. Each press of the MODE button switches into one of three MODES. The DST MODE is the default one.



## MALFUNCTIONS AND REASONS

1. KM/H value keep 0 during riding  
Improper magnet/wireless transmitter alignment, or the distance between the computer and the wireless transmitter is more than 80cm.
2. Inaccurate value is indicated  
Take out the battery and reset it after 10 seconds.
3. Black display  
Exposed to direct sunlight or high temperature environment for too long. Cold down in a shadow for some time.
4. Display shows irregular figures  
Poor battery contact or dead battery. Check and reset the battery or change a new battery.
5. Display readout fades out  
The battery voltage is low, change a new battery.

## COMPUTER SETTING

**TEMPERATURE SETTING (° C/° F)**  
In INQUIRY MODE, press SET button for 3 seconds to go to DATE SETTING MODE, press UP button to choose C or F, press SET button confirm and enter into CLOCK SETTING MODE.

## 12/24 CLOCK SETTING

Press the UP button to select time mode as 12H or 24H. Press the SET button to enter HOUR setting mode, when the figure indicating HOUR start to flash, press the UP button to adjust it continue to press the SET button to enter MINUTE setting mode when the figure indicating MINUTE start to flash, press the UP button to enter into TYRE CIRCUMSTANCE setting mode.

## WHEEL SIZE SETTING & CHART

In WHEEL SIZE SETTING MODE, the default wheel circumference setting is 2080mm, Choose correct wheel circumference figure as the chart below. Press UP button to change each figure properly press SET button to confirm and jump to next figure. (Range: 0-9999mm). When this setting is over, press SET button to enter into (KM/H)/(M/H) SETTING MODE.

## (KM/H) / (M/H) SETTING

In (KM/H)/(M/H) setting mode, press the UP button to switch km/h or m/h, Press the SET button to confirm and enter into ODOMETER SETTING MODE.

## ODOMETER SETTING

In ODO setting mode, press the UP button to adjust the flash digitals and press the SET button to advance the digital, the default number is 0000(ranges 0-9999km/miles). When finished the ODO setting, press the SET button to enter into the RAT SETTING MODE.

## RAT SETTING

In RAT setting mode, press the UP button to adjust the flashing digital and press the SET button to jump to next figure. The default number is 00:00:00(ranges 0-9999hours). Having finished the RAT setting, press the SET button to enter into the DISPLAY MODE. Then press MODE to enter into TM UP & TRIP UP SETTING MODE.

## TM UP & TRIP UP SETTING

In TM UP & TRIP UP SETTING MODE, Press the SET button for 3 seconds to enter into the TM UP and TRIP UP setting mode, press the UP button to adjust, press the SET button to jump to next figure. The default number for TRIP UP is 000.0(ranges 0-999.9km/mile). The default number for TM UP is 00:00:00(ranges 0-99:59:59 hours). Press the SET button to finish this setting and enter into TM DOWN & TRIP DOWN SETTING MODE.

## TM DOWN & TRIP DOWN SETTING

In TM DOWN and TRIP DOWN SETTING MODE, press the SET button for 3 seconds to set the figure of TM DOWN and TRIP DOWN. Press the UP button to adjust, Press the SET button to jump to next figure. The default number for TM DOWN is 00:00:00(ranges: 9:59:59-99:59:59 hours). The default number for TRIP DOWN is 000.0 (ranges: 99.9-999.9 km/mile) 1. Press the SET button to finish this setting and back to TM DOWN & TRIP DOWN SETTING MODE.

## ONE SINGLE TRIP DATA RESET

In any mode, press and holds UP button for 3 seconds, then all the date of this single trip riding will be reset to zero except CLK ODO and RAT.

SPD	TIRES SIZE	CIRC(mm)
0.00	16" x 1.5"	1206
0.00	16" x 1.95"	1253
208.0	16" x 2.0"	1257
0.00	20" x 1.25"	1450
0.00	20" x 1.35"	1460
0.00	20" x 1.50"	1490
0.00	20" x 1.75"	1515
0.00	20" x 1.95"	1565
0.00	20" x 1-1/8"	1545
0.00	20" x 1-3/8"	1615
0.00	20" x 1-1/4"	1618
0.00	22" x 1-3/8"	1770
0.00	22" x 1-1/2"	1785
0.00	24" x 1(520")	1753
0.00	24" x 3/4 Tubular	1785
0.00	24" x 1-1/8"	1795
0.00	24" x 1.75"	1890
0.00	24" x 1-1/4"	1905
0.00	24" x 1.9/1.95"	1916
0.00	24" x 2.00"	1925
0.00	24" x 2.125"	1965
0.00	26" x 1.0"	1913
0.00	26" x 1.25"	1953
0.00	26" x 1.5"	1985
0.00	26" x 1.75"	2035
0.00	26" x 1.9/1.95"	2055
0.00	26" x 2.0"	2074
0.00	26" x 2.1"	2095
0.00	26" x 2.25"	2115
0.00	26" x 2.3"	2135
0.00	27" x 1-1/8"	2155
0.00	27" x 1-1/4"	2161
0.00	29" x 2.1"	2288
0.00	29" x 2.2"	2298
0.00	29" x 2.3"	2326
0.00	650c x 20mm	1945
0.00	650c x 23mm	1990
0.00	700c Tubular	2130
0.00	700c x 20mm	2074
0.00	700c x 23mm	2105
0.00	700c x 25mm	2124
0.00	700c x 28mm	2136
0.00	700c x 30mm	2145
0.00	700c x 32mm	2155
0.00	700c x 35mm	2168
0.00	700c x 38mm	2180

## FUNCTIONS

### SPD

When the wheel is circling, the current speed data is showing all the time on the screen, its ranges is : 0-99.9km/h(mph), and it is accurate to +/- 0.1km/h (mi/h).

### SPD COMPARATOR

During riding,  $\uparrow$  or  $\downarrow$  will display on the screen,  $\uparrow$  indicates the speed is higher than average speed.  $\downarrow$  indicates the current speed is lower than average speed.

### ODO

The total distance record from the beginning zero to the current. Its mileage ranges : 0.001 - 99999km(m). The display will automatically turn to zero if the value is out of the range.

### DST

The distance of one single trip. Its range is: 0-9999km(m). The display will automatically turn to zero if the value is out of the range.

### MAX SPD

The maximum speed of one single trip.

### AVS

The average speed of one single trip.

### TM

The trip time is how long one single trip riding lasts.

### TTM

The total trip time record from the beginning zero to the current. Its range is: 0-99:59:59. The display will automatically turn to zero if the value is out of the range..

### RAT

Riding time record in total from the beginning zero to the current. Its range is 0-9999 Hr..

### STOPWATCH

In DST or ODO mode, press SET button to enter into STOPWATCH MODE. Start stopwatch with UP button, press UP button again to freeze, press one more UP button to start the stopwatch again. Clean the stopwatch data by pressing SET button.

### TH

The current outdoor temperature. Its ranges is -20 (°C) -41-158°F.

### SLEEP MODE

If the computer is free for over 300 seconds, the computer will automatically enter into Sleep mode and hide all data but CLK. It will turn back to the previous mode with all the data when start circling or press any mode or shake handlebar.

### OVER-SPEED REMINDER

When the SPD is over 20KM/H, the SPD will be flashing until the SPD is less than 20KM/H.

### MAINTENANCE ALERT

When the ODO is over 300KM, will be flashing, press both UP and MODE button at the same time to clear the reminder.

### CARE REMINDER

When the ODO is over 300KM, the will be flashing, press both UP and MODE button at the same time to clear the reminder.

### FREEZE FRAME MEMORY

Press the UP button in any mode except STOPWATCH mode to enter into FreezeFrame memory mode, DST, TTM, SPD data will be frozen and the figures start flashing. Press the UP button to leave this mode.

### LOW BATTERY INDICATOR

When the voltage is low, the low voltage symbol will be flashing, after change the battery the symbol disappear.

### TOUCH SCREEN(MODE)

Touch the mark bit of MODE, MODE will switch automatically.

### AUTO BACK LIGHT & EVER-BRIGHTENING BACK LIGHT

It can sense automatically the light intensity around the computer. It will be ON when there is insufficient light, press any button to turn on the back light. It will be OFF automatically when there is sufficient light. Press the MODE button for 5 seconds, the back light will keep brightening, press it for another 5 seconds, the back light will be OFF.

### WIRED REMOTE CONTROL

The wired remote control is attached the mounting shoe, it is easy to switch when riding.